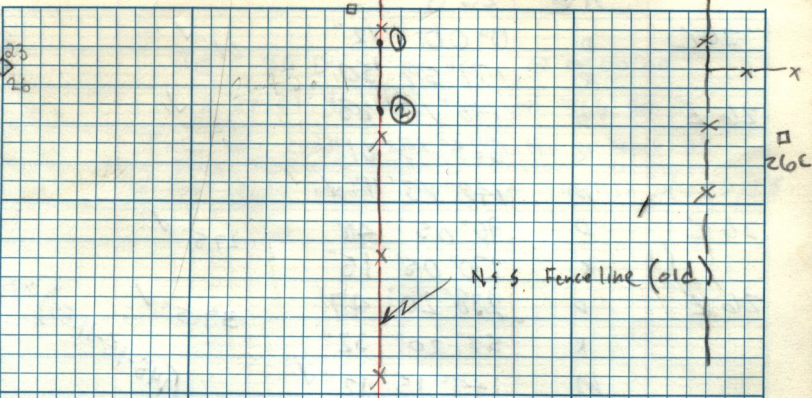


26B

5-18-99

71 X



A @ 26 B B.S. 26 C @ 0°00'00"

A RT 73°30'02" ①
Dist 46.93

A RT 78°33'50" ②
Dist 180.87

A @ 26 C B.S. 26 B 0°00'00"

A RT 50°36'00" Dist 432.25

To Rock @ Fence Int.

For $\frac{231.24}{20.25}$ T7N R1E

